



DLK1 Monoclonal Antibody

Catalog No	YP-Ab-15828
Isotype	IgG
Reactivity	Human
Applications	WB;IF;FCM;ELISA
Gene Name	DLK1
Protein Name	Protein delta homolog 1
Immunogen	Purified recombinant fragment of human DLK1 expressed in E. Coli.
Specificity	DLK1 Monoclonal Antibody detects endogenous levels of DLK1 protein.
Formulation	Ascitic fluid containing 0.03% sodium azide, 0.5% BSA, 50% glycerol.
Source	Monoclonal, Mouse
Purification	Affinity purification
Dilution	Western Blot: 1/500 - 1/2000. Immunofluorescence: 1/200 - 1/1000. Flow cytometry: 1/200 - 1/400. ELISA: 1/10000. Not yet tested in other applications.
Concentration	1 mg/ml
Purity	≥90%
Storage Stability	-20°C/1 year
Synonyms	DLK1; DLK; Protein delta homolog 1; DLK-1; pG2
Observed Band	
Cell Pathway	Membrane; Single-pass type I membrane protein. Cytoplasm .
Tissue Specificity	Found within the stromal cells in close contact to the vascular structure of placental villi, yolk sac, fetal liver, adrenal cortex and pancreas and in the beta cells of the islets of Langerhans in the adult pancreas. Found also in some forms of neuroendocrine lung tumor tissue.
Function	alternative products: Additional isoforms seem to exist, function: May have a role in neuroendocrine differentiation., PTM: N- and O-glycosylated., similarity: Contains 6 EGF-like domains., subunit: Monomer., tissue specificity: Found within the stromal cells in close contact to the vascular structure of placental villi, yolk sac, fetal liver, adrenal cortex and pancreas and in the beta cells of the islets of Langerhans in the adult pancreas. Found also in some forms of neuroendocrine lung tumor tissue.,
Background	This gene encodes a transmembrane protein that contains multiple epidermal growth factor repeats that functions as a regulator of cell growth. The encoded protein is involved in the differentiation of several cell types including adipocytes. This gene is located in a region of chromosome 14 frequently showing uniparental disomy, and is imprinted and expressed from the paternal allele. A single nucleotide variant in this gene is associated with child and adolescent obesity and shows polar overdominance, where heterozygotes carrying an active paternal



allele express the phenotype, while mutant homozygotes are normal. [provided by RefSeq, Nov 2015],

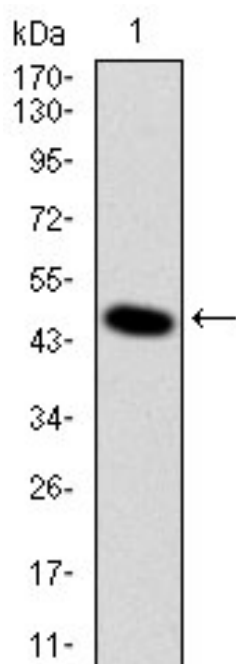
matters needing attention

Avoid repeated freezing and thawing!

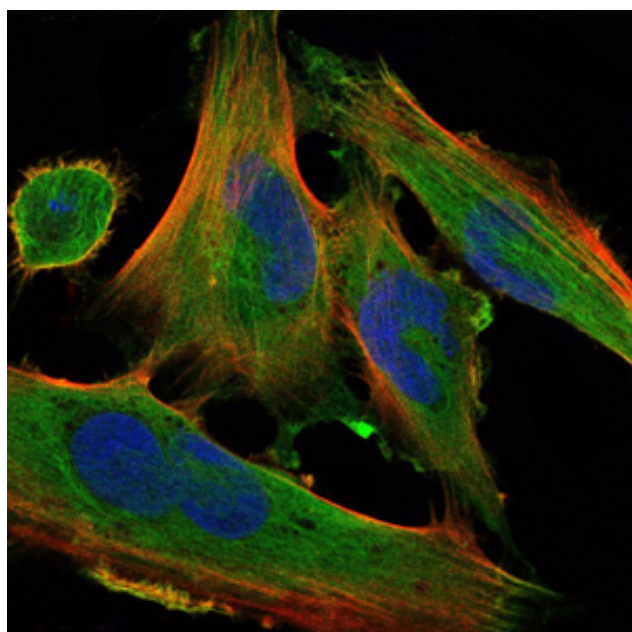
Usage suggestions

This product can be used in immunological reaction related experiments. For more information, please consult technical personnel.

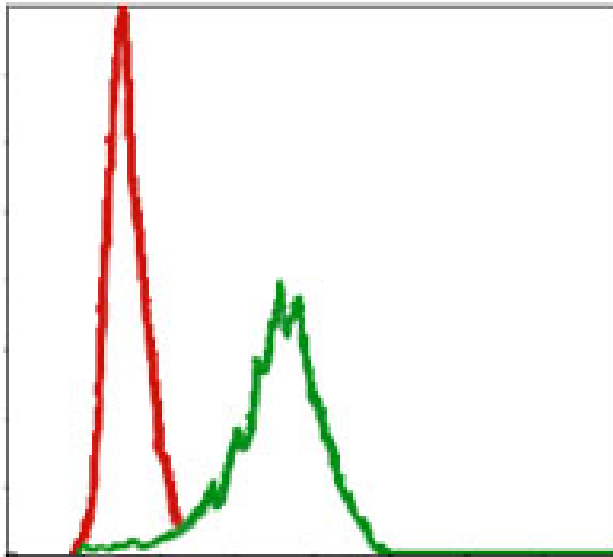
Products Images



Western Blot analysis using DLK1 Monoclonal Antibody against human DLK1 (AA: 174-349) recombinant protein.



Immunofluorescence analysis of U251 cells using DLK1 Monoclonal Antibody (green). Blue: DRAQ5 fluorescent DNA dye. Red: Actin filaments have been labeled with Alexa Fluor-555 phalloidin.



Flow cytometric analysis of NIH/3T3 cells using DLK1 Monoclonal Antibody (green) and negative control (red).

